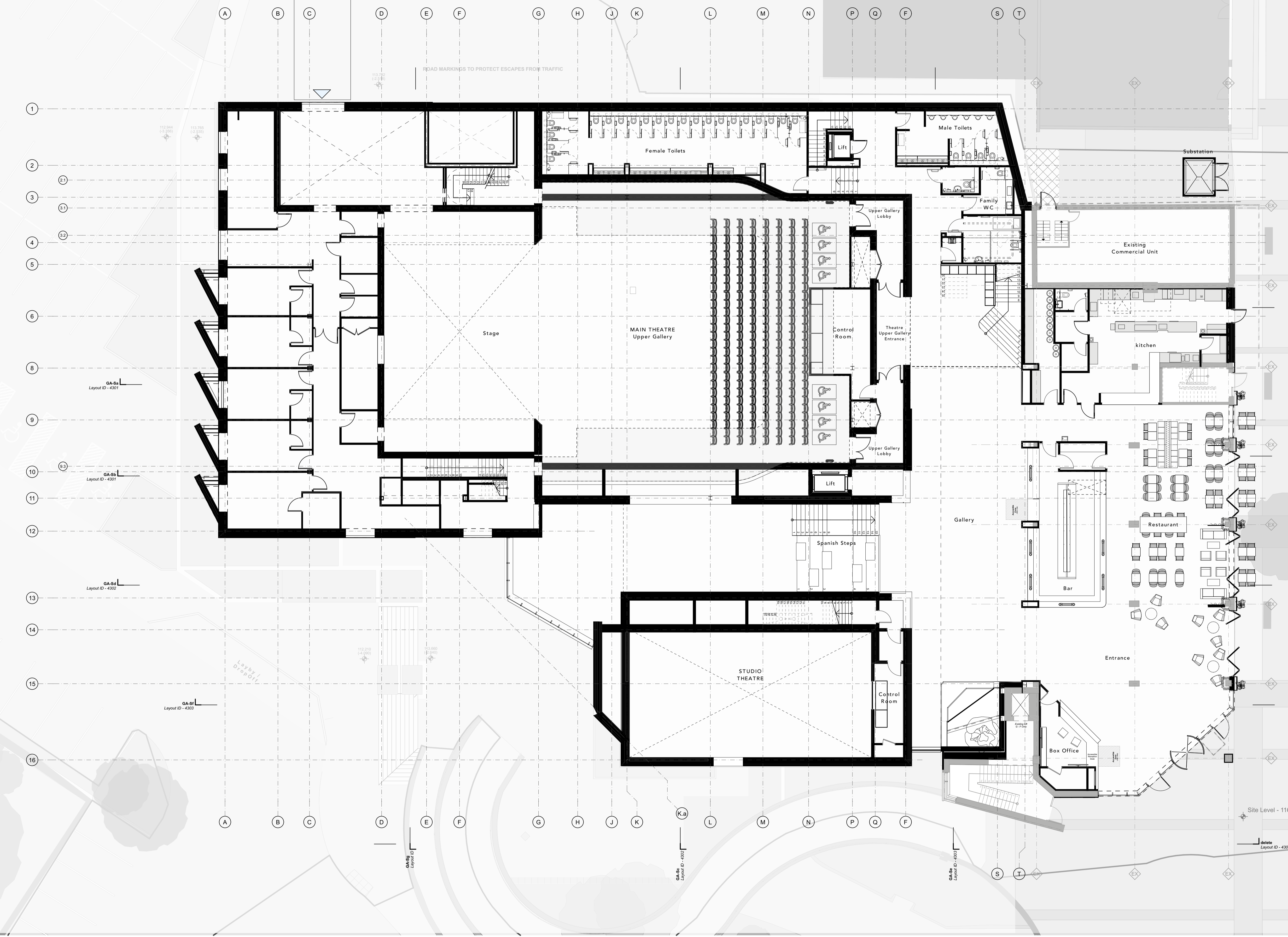
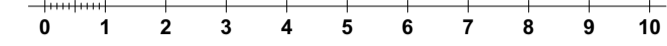
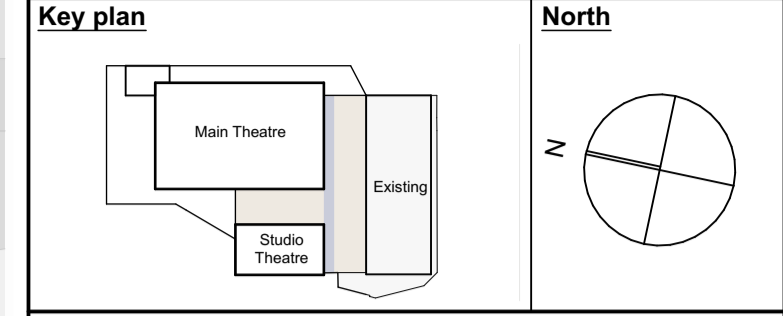


**GA PLAN -
GROUND FLOOR
0,000mm (116.3m)**

This document is © Bond Bryan Architects Ltd.
If in doubt ASK. Drawing measurements shall not be obtained by scaling. Verify all dimensions prior to construction.
Immediately report any discrepancies on this document to the Originator. This document shall be read in conjunction with associated models, specifications and related consultants' documents.



P01	Issued for Planning	RM	14/05/2024
Rev	Description	Drawn	Checked

B
BOND BRYAN
e info@bondbryan.co.uk
w www.bondbryan.co.uk

Telford & Wrekin Council
Telford & Wrekin
Co-operative Council
Telford Theatre
Limes Walk, 19 Limes Rd, Telford TF2 6EP

Proposed Ground Floor Plan

Originator project ref 23070	Purpose of Issue Stage 3
Scale(s) 1:125	Revision description Preliminary
Paper size A1	

project	originator	volume	level	type	role	number	revision
TTH	BBA	ZZ	00	DR	A	2250	P01